



10 Aspire Apartments Bootham YO30 7BT

£1,350 PCM

2



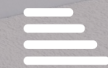
2



1



B



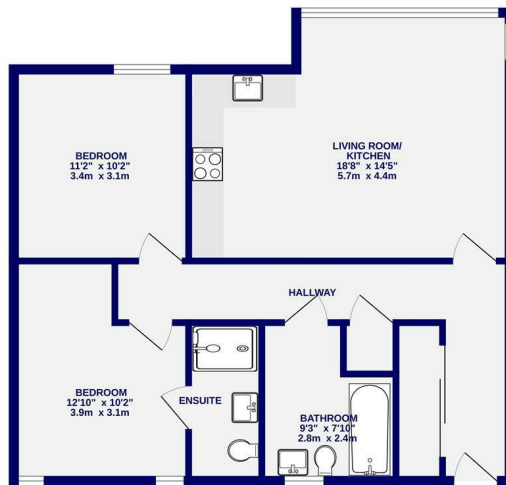
Located only minutes walk from the city centre is this very well presented two bedroom top floor apartment offered for let on an unfurnished basis. The property comprises entrance hall with built in storage cupboards; Open plan living / dining/ kitchen equipped with electric oven/hob, integrated fridge/freezer, dishwasher and washer/dryer. There are two double bedrooms, one with ensuite shower room. The property comes with one allocated parking space within the communal parking garage.

Available 30th July

Deposit £1400 / EPC Rating B / Council Tax Band D / Head Lease does not permit pets



3RD FLOOR
732 sq.ft. (68.0 sq.m.) approx.



TOTAL FLOOR AREA: 732 sq.ft. (68.0 sq.m.) approx.
While every effort has been made to ensure the accuracy of the floorplan, measurements of rooms and any other areas are approximate. It is advised that you should verify the accuracy of the floorplan with your agent at the time of viewing. This plan is for illustrative purposes only and should be used as a guide for any prospective purchaser. The fixtures, fittings and appliances shown here are for illustrative purposes and are not guaranteed and may vary.



Ashtons Lettings



01904 731404



lettings@ashtonsnet.com

